

# PROPERTY AVAILABLE

## FORMER RETAIL STORE & BUILDING MATERIALS CENTER

3901 North 27th Street • Lincoln, Nebraska 68521

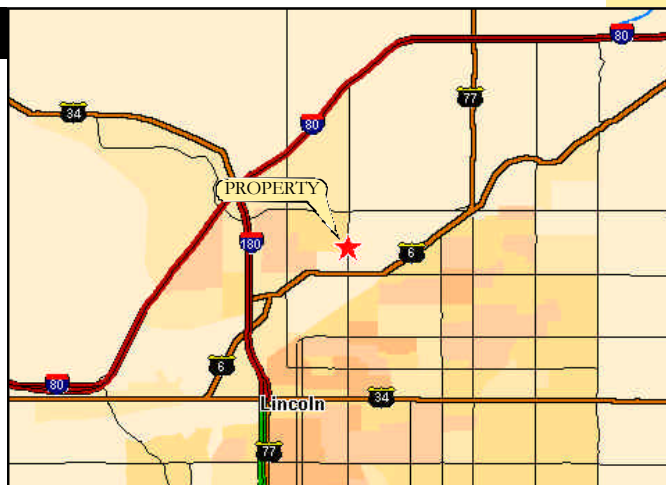


The property is located along the west side of North 27th Street, in the northern portion of the City of Lincoln. Generally speaking, the neighborhood can be defined as Superior Street to the north, 56th Street to the east, Interstate 80 to the north and west, and 14th Street to the west. The site is located along the west side of North 27th Street, a growing retail corridor in Lincoln.

The retail store consists of a showroom/sales area, office space and receiving room. It is air conditioned and heated with a finished ceiling, restrooms, sprinkler system and an overhead loading door.

### property overview

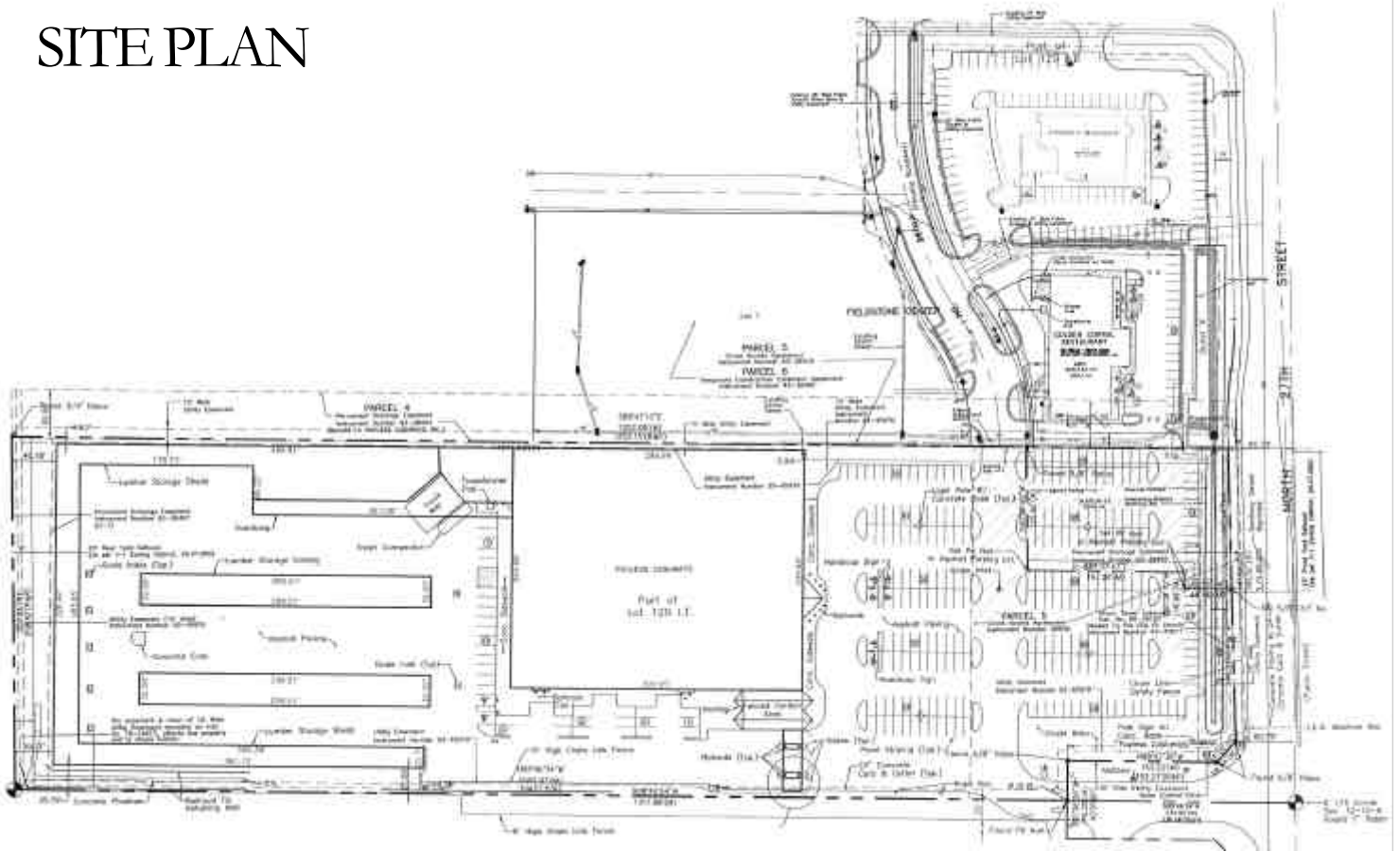
Retail Store	73,500 SF
Warehouse	4,000 SF
Lumberyard	181,000 SF
Total Land	10.18 acres
Parking	227 spaces
Current Zoning	I-1
Year Built	1994



Information regarding property has been furnished by sources deemed reliable. We do not guarantee accuracy and are not responsible for errors, omissions, prior sale, lease or withdrawal.

Contact: Kerry Bush / Surplus Real Estate  
6299 Nall Ave., Suite 350 • Mission, KS 66202  
913-362-3377 Voice / 1-866-362-3377 Toll Free  
email: kbush@surplusrealestate.com

# SITE PLAN



Contact: Kerry Bush / Surplus Real Estate  
6299 Nall Ave., Suite 350 • Mission, KS 66202  
913-362-3377 Voice / 1-866-362-3377 Toll Free  
email: kbush@surplusrealestate.com